

C.I.P.

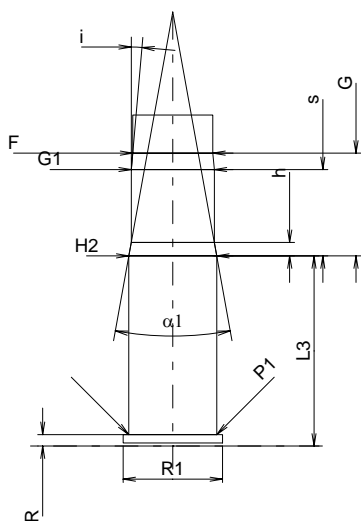
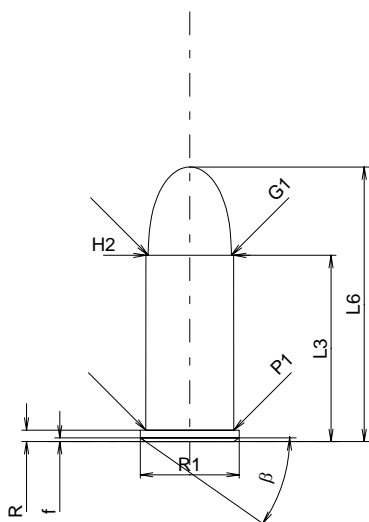
44 S&W Russian

Country of Origin: US

TAB. IV

Date 84-06-14

Revision 00-06-07



Scale 1:1

Dimensions in << mm >>
Dimensions and Tolerances for Proof Barrels
see Appendix CR 1.

Maximum Cartridge

Cartridge Lengths

L1	=	
L2	=	
L3 ¹⁾	=	24.64
L4	=	
L5	=	
L6	=	36.32

Cartridge Head

R ¹⁾	=	1.52	-0.25
R1	=	13.08	
R3	=		
E	=		
E1	=		
e min	=		
delta	=		
f	=	0.50	
beta	=	35°	

Cartridge Body

P1	=	11.61
P2	=	

Cartridge Shoulder

alpha	=	
S	=	
r1 min	=	
r2	=	

Cartridge Neck

H1	=	
H2 ¹⁾	=	11.59

Bullet

G1 ¹⁾	=	10.98
G2	=	
F	=	
L3+G ¹⁾	=	38.23

Pressures (Energies)

Method Transducer

Pmax	=	1000 bar
PK	=	1150 bar
PE	=	1300 bar
M	=	12.50

Miscellaneous Dimensions

Fe ¹⁾	=	0.25
delta L	=	

Minimum Chamber

Chamber Lengths

L1	=	
L2	=	
L3 ¹⁾	=	25.15

Chamber Head

R ¹⁾	=	1.52
R1	=	13.16
R2	=	
R3	=	
r	=	

Powder Chamber

E	=	
P1 ¹⁾	=	11.62
P2	=	

Chamber Shoulder

alpha	=	
S	=	
r1 max	=	
r2	=	

Chamber Neck

H1	=	
H2 ¹⁾	=	11.61

Throat Dimensions

G1 ^{1)*}	=	10.97
G ¹⁾	=	13.59
alpha1 [*]	=	20°24'
h	=	1.78
s	=	11.42
j ^{1)*}	=	5°
w	=	

Barrel Dimensions

F ^{1)*}	=	10.59
Z ¹⁾	=	10.90

Rifling

b	=	3.26
N	=	5
u	=	508.00
Q	=	90.65 mm ²

Notes: 1) Check for safety reasons
* Basic dimensions